



WaterArmor-TG™

Air & Moisture Resistive Barrier

WaterArmor-TG™ is a high quality, flexible trowel grade joint treatment and water barrier for ProGUARD™ and ProTEC™ panels. With a 12-perm rating, WaterArmor-TG™ is may be applied as a continuous flashing at penetrations and openings. WaterArmor-TG is available in five-gallon (19L) pails.

Application Procedure

Job Conditions - Air and substrate temperature for application of *WaterArmor-TG™* must be 40°F (5°C) or higher and must remain 40°F (5°C) or higher for a minimum of 24 hours.

Temporary Protection – Must be provided at all times until the *WaterArmor-TG™* has dried.

Surface Preparation - Surface must be clean, dry, structurally sound and free of efflorescence, oil, grease, form release agents, and curing compounds. On previously painted surfaces, all loose, peeling and chalking paint must be removed. Any glossy areas must be sanded. Substrates must be flat and free of fins or planar irregularities greater than 1/4" in 10'-0" (6.4 mm in 3.05 m).

Mixing - Thoroughly stir *WaterArmor-TG™* into a homogenous consistency. Do not add water, over mix, or add accelerators or retarders to *WaterArmor-TG™*.

ProGUARD and ProTEC Panels– Panel gaps must be less than 1/4" (6.4 mm). Apply *WaterArmor-TG™* with one of the following techniques using a stainless steel drywall taping knife or trowel:

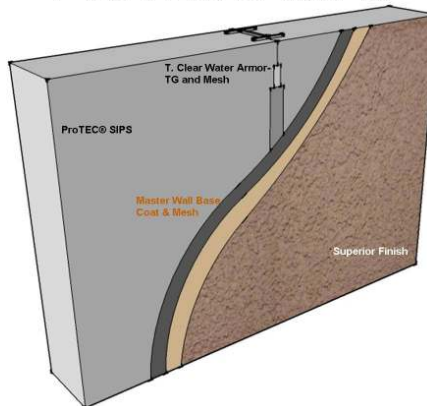
- Center T. Clear Self-Adhesive Mesh over panel joints and transitions and apply a skim coat of *WaterArmor-TG™* about 1/16" (1.6 mm) nominal thickness.
- Apply a skim coat of *WaterArmor-TG™* about 1/16" (1.6 mm) thick and immediately center and embed T. Clear Self-Adhesive Mesh into the wet skim coat.

Follow detail recommendations for flashing into openings.

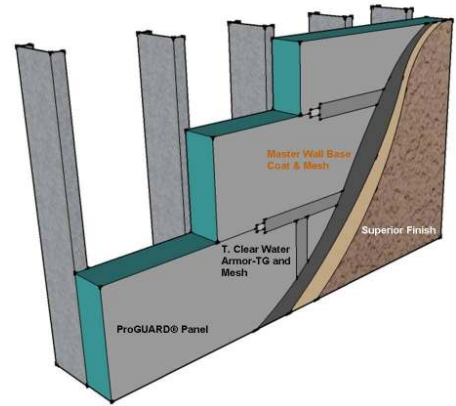
Clean Up - Tools and equipment can be cleaned with soapy water when *WaterArmor-TG™* is wet.

Limitations - Not for use as an exterior finish. Maximum exposure before covering with siding is 30 days.

ProTEC® SIPS



ProGUARD® Panels



Typical Joint Treatment with Finish System

Product Information

Coverage (Estimated/varies by thickness)

Water Barrier: 200-230 sf (18.6-21.4 sm)/pail
 Joint Treatment: 500-600 sf (150-180 sm)/pail

Pail Weight: 60 lbs (27kg)

Working Time: 1 hour @ room temperature

Drying Time: 2 hours @ room temperature (thin applications)

Application Range: 40°-110°F (5°-43°C)

Exposure: 30 days maximum

Shelf Life: 2 years

Information contained in this product data sheet conforms to the standard detail recommendations and specifications for the installation of T. Clear Corporation products and is presented in good faith. T. Clear Corporation assumes no liability, expressed or implied as to the architecture, engineering, or workmanship of any project. This information may be concurrent with, or superseded by other applicable documents, such as specifications and details. Contact T. Clear Corporation for the most current product information.



**3255 Symmes Road
 Hamilton, OH 45015**

TF: 800.544.7398

P: 513.870.9246

F: 513.870.9606

www.tclear.com