



**Provider**

T. Clear Corp. T037

**Course #**

T037CES01

**Learning Units: 1.0**

LU/HSW Hour

**AV Needed**

Electrical power,  
projector and a screen.

**Contact**

T. Clear Corporation  
3255 Symmes Road  
Hamilton, OH 45015  
800-544-7398  
sales@tclear.com

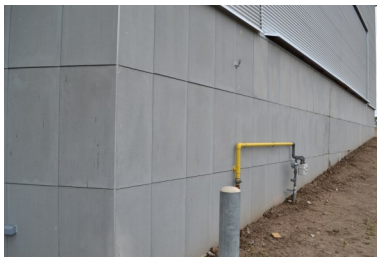
**www.tclear.com**

# Continuing Education

## **Concrete Faced Continuous Insulation Systems**

### Course Description

Provides an overview of design criteria used in designing energy efficient buildings using concrete faced continuous insulation systems for low-slope roofing, walls, and foundations.



### Learning Objectives

- Discuss energy efficient building design considerations and the role of continuous insulation (ci) in an energy efficient building envelope.
- Discuss the performance characteristics of concrete and how they contribute to sustainable building projects.
- Compare the performance of a protective membrane roof (PMR) assembly to that of a conventional roof assembly, and identify the advantages of installing a PMR system with concrete insulated panels.
- Evaluate the functional and physical features of concrete insulated sheathing panels, concrete faced insulated perimeter wall panels, and concrete structural insulated panels (CSIPS), and relay the advantages of using these materials in the design of energy efficient buildings.

**Presenter:** \_\_\_\_\_