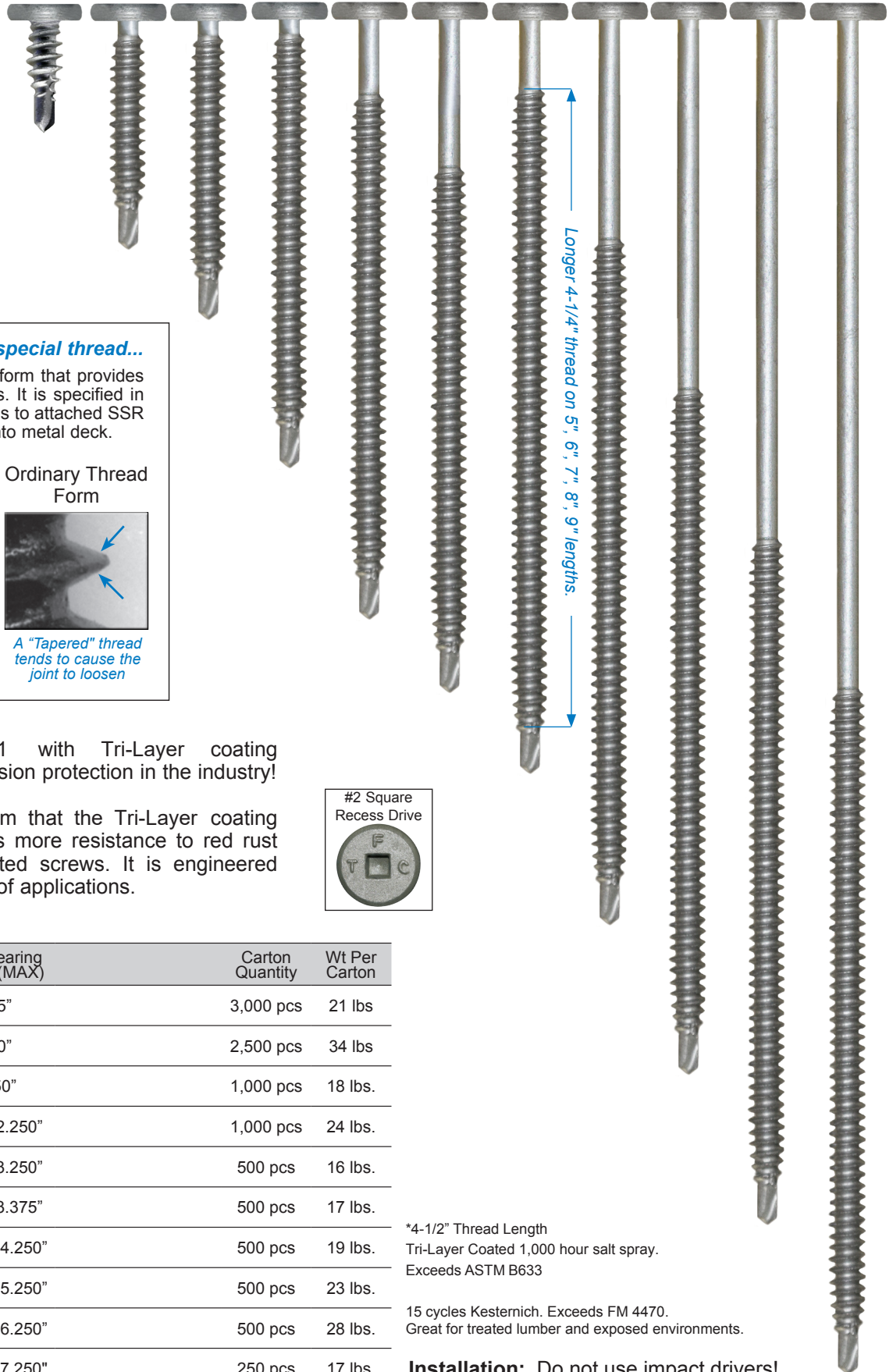


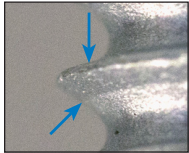
- #2 Square recess for driving stability.
- Fasten into wood or metal up to 16ga consistently
- Can be used to attach nail base



Here is why we use a special thread...

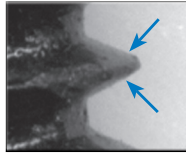
We use a buttress thread form that provides exceptional clamping loads. It is specified in many metal roofing systems to attached SSR clips over rigid insulation into metal deck.

Silver C#14 with Buttress Thread



"Flat" thread keeps the joint tight

Ordinary Thread Form



A "Tapered" thread tends to cause the joint to loosen

Silver C#14 DP1 with Tri-Layer coating provides the best corrosion protection in the industry!

Salt spray tests confirm that the Tri-Layer coating provides over 10 times more resistance to red rust than black epoxy coated screws. It is engineered to perform in a variety of applications.

#2 Square Recess Drive



Sizes

Description	Load Bearing Length (MAX)	Carton Quantity	Wt Per Carton
#14-13 x 3/4" DP1	.125"	3,000 pcs	21 lbs
#14-13 x 1-1/2" DP1	.750"	2,500 pcs	34 lbs
#14-13 x 2" DP1	1.250"	1,000 pcs	18 lbs.
#14-13 x 3" DP1	.125" - 2.250"	1,000 pcs	24 lbs.
#14-13 x 4" DP1	.125" - 3.250"	500 pcs	16 lbs.
#14-13 x 4-1/2" DP1	.625" - 3.375"	500 pcs	17 lbs.
#14-13 x 5" DP1*	1.125" - 4.250"	500 pcs	19 lbs.
#14-13 x 6" DP1*	2.125" - 5.250"	500 pcs	23 lbs.
#14-13 x 7" DP1*	3.875" - 6.250"	500 pcs	28 lbs.
#14-13 x 8" DP1*	4.875" - 7.250"	250 pcs	17 lbs.
#14-13 x 9" DP1*	5.875" - 8.250"	250 pcs	19 lbs.

*4-1/2" Thread Length
 Tri-Layer Coated 1,000 hour salt spray.
 Exceeds ASTM B633

15 cycles Kesternich. Exceeds FM 4470.
 Great for treated lumber and exposed environments.

Installation: Do not use impact drivers!
 Use 2,500 RPM max variable speed screw drivers with torque control or depth sensing nosepiece.